

# NII LASER TECHNOLOGY

## Dynamic Laser Marker CR Pro



### Overview

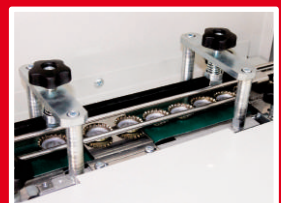
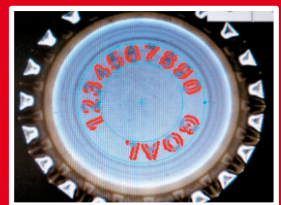
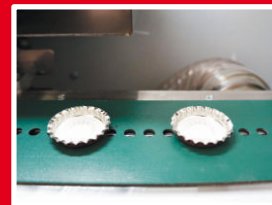
**DLM Pro (Dynamic Laser Marker)** series of laser equipment is designed for the precise laser marking on the inside or outside surface of the beverage closures of all kinds, including plastic closures, metal closures, synthetic wine corks and crowns. **DLM-CR Pro** is designed for the laser marking on crowns metal surface or PVC liner. As well **DLM-CR Pro** could be used for marking on metal cap used with muselet (champagne bottles). Laser beam with special characteristics interacts with material and laser marking occurs (dark on light material or light on dark material).

### Special features

- ♦ Crowns are transported on the conveyor belt to the marking area where marking process occurs 'on-the-fly'. Thus dynamic laser marking (DLM) allows reach high throughput with the highest marking quality.
- ♦ The software controls marking process of crowns. Software allows to mark logos, text and numbers with randomizing option or numbers increment (decrement) as vector or rasterized graphics. Files should be imported to the laser system software in one of the mainly used formats (Corel Draw, Adobe Illustrator etc.).
- ♦ There is no time-consuming setup process. If you need a small series of crowns or metal caps to be marked – just change file (graphics) and mark it.

### Overview

- ♦ Marking Quality Control system allows system to sort out samples with bad laser marking and puts them into separate box



# Flexibility guaranteed!



## Dynamic Laser Marker CR Pro

Crown type	Pry-off Twist-off
Output capacity (10x2mm symbols)	up to 60 000 parts/hour
The quantity of randomly marking files	14
Software	NII Laser Technology Marker
Power requirments	3 x 380V 50 Hz
Connected load	6 kW
Dimensions, W x H x D	1870mm x 2000mm x 1700mm
Approximate weight	max 510 kg

## Centrifugal feeder

Capacity, pc./h	80 000
Body material	Stainless steel AISI 304
Power supply	3 phase, 5-wire AC power, 380 V, 50 Hz
Max. power consumption. kW	1.8
Overall dimensions (W x H x L), mm	2850 x 2100 x 1450
Weight, kg	max 660



NII Laser Technology JSC  
Ukraine, 61166, Kharkiv  
14 Lenin ave.  
phone +38 (057) 702 12 07  
fax. +38 (057) 719 44 07  
www.niilt.com  
vikt@niilt.kharkov.com  
office@niilt.kharkov.com



**NONE WILL DO BETTER!**

Technical data